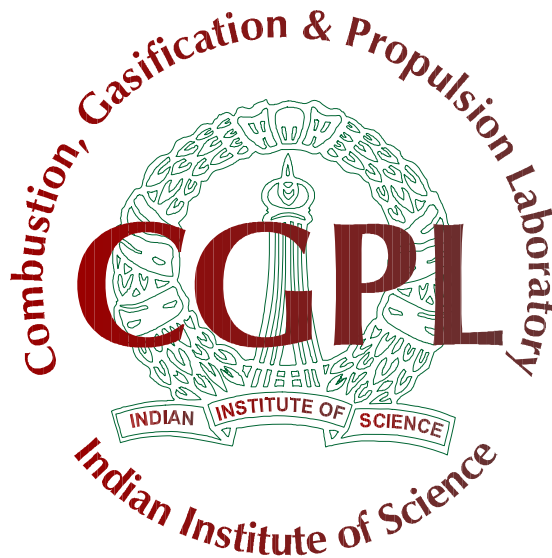


Biomass Mapping for Power Generation for Meghalaya

Biomass Manual



Combustion, Gasification & Propulsion Laboratory (CGPL)
Department of Aerospace Engineering
Indian Institute of Science
Bangalore 560 012

Biomass Assessment for Meghalaya Kharif, Rabi, Yearly and Agro



Biomass Assessment for Meghalaya

1. Kharif

a. State-level Residue-wise-----	01
b. State-level District-wise-----	02
c. State-level Taluk-wise-----	02
d. District-level Residue-wise-----	03
e. District-level Taluk-wise-----	06
f. Taluk-level Residue-wise-----	08

2. Rabi

a. State-level Residue-wise-----	16
b. State-level District-wise-----	17
c. State-level Taluk-wise-----	17
d. District-level Residue-wise-----	18
e. District-level Taluk-wise-----	19
f. Taluk-level Residue-wise-----	20

3. Yearly

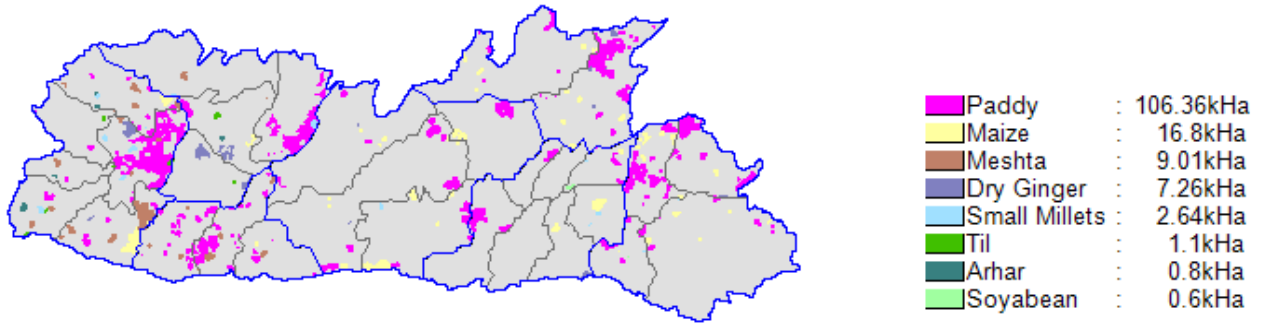
a. State-level Residue-wise -----	24
b. State-level District-wise-----	25
c. State-level Taluk-wise-----	25
d. District-level Residue-wise-----	26
e. District-level Taluk-wise-----	28
f. Taluk-level Residue-wise-----	30

4. Agro

a. State-level Residue-wise-----	37
b. State-level District-wise-----	37
c. State-level Taluk-wise-----	38
d. District-level Residue-wise-----	39
e. District-level Taluk-wise-----	41
f. Taluk-level Residue-wise-----	43

Kharif

Meghalaya-Kharif



State-level Residue-wise

State level Residue-wise Data for Meghalaya; Season : Kharif						
Crop	Residue	Area (kHa)	Crop Production (kT/Yr)	Biomass Generation (kT/Yr)	Biomass Surplus (kT/Yr)	Power Potential (MWe)
Paddy	Straw	106.4	151.4	227.1	22.7	2.7
Paddy	Husk	106.4	151.4	30.3	24.2	2.7
Maize	Stalks	16.8	25.0	50.1	5.0	0.65
Meshta	Stalks	9.0	10.4	20.7	2.1	0.27
Maize	Cobs	16.8	25.0	12.5	1.3	0.18
Others	Others	12.4	49.2	9.2	1.00	0.13
Total		144.6	236.0	350.0	56.3	6.6

State-level District-wise

State level District-wise Data for Meghalaya ; Season : Kharif					
District	Area (kHa)	Crop Production (kT/Yr)	Biomass Generation (kT/Yr)	Biomass Surplus (kT/Yr)	Power Potential (MWe)
West Garo Hills	52.1	67.8	104.9	16.4	1.9
Jaintia Hills	20.6	31.0	54.5	9.2	1.1
East Garo Hills	23.6	52.1	51.5	8.8	1.0
Ri Bhoi	14.6	34.8	51.6	8.5	1.00
West Khasi Hills	14.6	20.7	39.4	5.8	0.69
East Khasi Hills	8.3	17.3	26.4	4.0	0.48
South Garo Hills	10.7	12.3	21.8	3.6	0.42
Total	144.6	236.0	350.0	56.3	6.6

State-level Taluk-wise

State level Taluk-wise Data for Meghalaya ; Season : Kharif						
District	Taluk	Area (kHa)	Crop Production (kT/Yr)	Biomass Generation (kT/Yr)	Biomass Surplus (kT/Yr)	Power Potential (MWe)
West Garo Hills	Rongram	35.2	44.8	66.3	12.0	1.4
East Garo Hills	Damborongjeng	16.8	24.4	41.5	7.5	0.86
Ri Bhoi	Bhoi Area	12.0	29.1	41.0	7.0	0.81
Jaintia Hills	Thadlaskein	8.7	13.0	23.4	3.9	0.46
Jaintia Hills	Laskein	7.7	12.2	20.5	3.6	0.42
West Garo Hills	Dalu	9.6	14.8	23.4	2.5	0.32
South Garo Hills	Baghmara	6.2	7.1	12.7	2.1	0.24
West Khasi Hills	Nongstoin	5.0	7.0	12.3	2.0	0.24
West Khasi Hills	Nawkyrwat	4.9	6.9	15.1	1.8	0.23
East Khasi Hills	Mawsinram	3.3	6.3	10.2	1.9	0.21
Ri Bhoi	Nangpoh	2.6	5.7	10.6	1.5	0.18
West Khasi Hills	Mairang	3.2	4.8	8.3	1.3	0.15
West Garo Hills	Dadenggiri	4.0	5.1	9.0	1.1	0.14
South Garo Hills	Chokpot	3.5	3.9	6.8	1.2	0.14
East Garo Hills	Songsok	4.4	14.8	7.7	1.0	0.13
Jaintia Hills	Khlieriat	2.1	3.0	5.8	0.87	0.10
Jaintia Hills	Amlarem	2.1	2.9	4.8	0.73	0.086

District	Taluk	Area (kHa)	Crop Production (kT/Yr)	Biomass Generation (kT/Yr)	Biomass Surplus (kT/Yr)	Power Potential (MWe)
East Khasi Hills	Mawkynrew	1.7	2.8	6.4	0.64	0.084
East Khasi Hills	Mawryngkneng	1.4	2.3	4.0	0.66	0.078
West Garo Hills	Zikzak	2.3	2.1	4.2	0.60	0.072
East Khasi Hills	Mawrhlang	1.1	2.0	3.4	0.63	0.072
West Khasi Hills	Mawshynrut	1.4	2.0	3.7	0.59	0.069
South Garo Hills	Rongara	1.1	1.3	2.3	0.36	0.043
East Khasi Hills	Pynursla	0.89	4.0	2.4	0.24	0.032
West Garo Hills	Betasing	0.79	0.66	1.4	0.17	0.021
East Garo Hills	Resubelpara	0.54	0.79	1.6	0.16	0.021
West Garo Hills	Selsella	0.29	0.28	0.51	0.083	0.0097
East Garo Hills	Samanda	1.9	12.1	0.68	0.068	0.0089
Total		144.6	236.0	350.0	56.3	6.6

District-level Residue-wise

District level Residue-wise Data for East Garo Hills; Season : Kharif						
Crop	Residue	Area (kHa)	Crop Production (kT/Yr)	Biomass Generation (kT/Yr)	Biomass Surplus (kT/Yr)	Power Potential (MWe)
Paddy	Straw	17.5	25.7	38.6	3.9	0.46
Paddy	Husk	17.5	25.7	5.1	4.1	0.45
Others	Others	6.1	26.3	7.7	0.78	0.10
Total		23.6	52.1	51.5	8.8	1.0

District level Residue-wise Data for East Khasi Hills; Season : Kharif						
Crop	Residue	Area (kHa)	Crop Production (kT/Yr)	Biomass Generation (kT/Yr)	Biomass Surplus (kT/Yr)	Power Potential (MWe)
Paddy	Straw	5.3	9.9	14.8	1.5	0.18
Paddy	Husk	5.3	9.9	2.0	1.6	0.17
Maize	Stalks	1.9	3.5	6.9	0.69	0.090
Others	Others	1.1	4.0	2.7	0.27	0.036
Total		8.3	17.3	26.4	4.0	0.48

District level Residue-wise Data for Jaintia Hills; Season : Kharif						
Crop	Residue	Area (kHa)	Crop Production (kT/Yr)	Biomass Generation (kT/Yr)	Biomass Surplus (kT/Yr)	Power Potential (MWe)
Paddy	Straw	16.8	26.5	39.7	4.0	0.48
Paddy	Husk	16.8	26.5	5.3	4.2	0.47
Maize	Stalks	3.0	3.2	6.5	0.65	0.084
Others	Others	0.89	1.3	3.0	0.30	0.040
Total		20.6	31.0	54.5	9.2	1.1

District level Residue-wise Data for Ri Bhoi; Season : Kharif						
Crop	Residue	Area (kHa)	Crop Production (kT/Yr)	Biomass Generation (kT/Yr)	Biomass Surplus (kT/Yr)	Power Potential (MWe)
Paddy	Straw	12.0	24.1	36.1	3.6	0.43
Paddy	Husk	12.0	24.1	4.8	3.8	0.42
Maize	Stalks	1.9	4.1	8.3	0.83	0.11
Others	Others	0.73	6.6	2.4	0.24	0.033
Total		14.6	34.8	51.6	8.5	1.00

District level Residue-wise Data for South Garo Hills; Season : Kharif						
Crop	Residue	Area (kHa)	Crop Production (kT/Yr)	Biomass Generation (kT/Yr)	Biomass Surplus (kT/Yr)	Power Potential (MWe)
Paddy	Straw	9.2	10.3	15.4	1.5	0.18
Paddy	Husk	9.2	10.3	2.1	1.6	0.18
Others	Others	1.6	2.1	4.3	0.43	0.056
Total		10.7	12.3	21.8	3.6	0.42

District level Residue-wise Data for West Garo Hills; Season : Kharif						
Crop	Residue	Area (kHa)	Crop Production (kT/Yr)	Biomass Generation (kT/Yr)	Biomass Surplus (kT/Yr)	Power Potential (MWe)
Paddy	Straw	36.2	42.0	63.0	6.3	0.76
Paddy	Husk	36.2	42.0	8.4	6.7	0.74
Meshta	Stalks	7.0	7.5	15.0	1.5	0.20
Maize	Stalks	4.0	5.8	11.6	1.2	0.15
Others	Others	4.9	12.5	6.9	0.75	0.100
Total		52.1	67.8	104.9	16.4	1.9

District level Residue-wise Data for West Khasi Hills; Season : Kharif						
Crop	Residue	Area (kHa)	Crop Production (kT/Yr)	Biomass Generation (kT/Yr)	Biomass Surplus (kT/Yr)	Power Potential (MWe)
Paddy	Straw	9.5	13.0	19.5	2.0	0.23
Paddy	Husk	9.5	13.0	2.6	2.1	0.23
Maize	Stalks	4.7	6.8	13.6	1.4	0.18
Others	Others	0.40	0.90	3.7	0.37	0.051
Total		14.6	20.7	39.4	5.8	0.69

District-level Taluk-wise

DistrictLevel Taluk-wise Data for East Garo Hills ; Season : Kharif					
Taluk	Area (kHa)	Crop Production (kT/Yr)	Biomass Generation (kT/Yr)	Biomass Surplus (kT/Yr)	Power Potential (MWe)
Damborongjeng	16.8	24.4	41.5	7.5	0.86
Songsok	4.4	14.8	7.7	1.0	0.13
Resubelpara	0.54	0.79	1.6	0.16	0.021
Samanda	1.9	12.1	0.68	0.068	0.0089
Total	23.6	52.1	51.5	8.8	1.0

DistrictLevel Taluk-wise Data for East Khasi Hills ; Season : Kharif					
Taluk	Area (kHa)	Crop Production (kT/Yr)	Biomass Generation (kT/Yr)	Biomass Surplus (kT/Yr)	Power Potential (MWe)
Mawsinram	3.3	6.3	10.2	1.9	0.21
Mawkynrew	1.7	2.8	6.4	0.64	0.084
Mawryngkneng	1.4	2.3	4.0	0.66	0.078
Mawrhlang	1.1	2.0	3.4	0.63	0.072
Pynursla	0.89	4.0	2.4	0.24	0.032
Total	8.3	17.3	26.4	4.0	0.48

DistrictLevel Taluk-wise Data for Jaintia Hills ; Season : Kharif					
Taluk	Area (kHa)	Crop Production (kT/Yr)	Biomass Generation (kT/Yr)	Biomass Surplus (kT/Yr)	Power Potential (MWe)
Thadlaskein	8.7	13.0	23.4	3.9	0.46
Laskein	7.7	12.2	20.5	3.6	0.42
Khlieriat	2.1	3.0	5.8	0.87	0.10
Amlarem	2.1	2.9	4.8	0.73	0.086
Total	20.6	31.0	54.5	9.2	1.1

DistrictLevel Taluk-wise Data for Ri Bhoi ; Season : Kharif					
Taluk	Area (kHa)	Crop Production (kT/Yr)	Biomass Generation (kT/Yr)	Biomass Surplus (kT/Yr)	Power Potential (MWe)
Bhoi Area	12.0	29.1	41.0	7.0	0.81
Nangpoh	2.6	5.7	10.6	1.5	0.18
Total	14.6	34.8	51.6	8.5	1.00

DistrictLevel Taluk-wise Data for South Garo Hills ; Season : Kharif					
Taluk	Area (kHa)	Crop Production (kT/Yr)	Biomass Generation (kT/Yr)	Biomass Surplus (kT/Yr)	Power Potential (MWe)
Baghmara	6.2	7.1	12.7	2.1	0.24
Chokpot	3.5	3.9	6.8	1.2	0.14
Rongara	1.1	1.3	2.3	0.36	0.043
Total	10.7	12.3	21.8	3.6	0.42

DistrictLevel Taluk-wise Data for West Garo Hills ; Season : Kharif					
Taluk	Area (kHa)	Crop Production (kT/Yr)	Biomass Generation (kT/Yr)	Biomass Surplus (kT/Yr)	Power Potential (MWe)
Rongram	35.2	44.8	66.3	12.0	1.4
Dalu	9.6	14.8	23.4	2.5	0.32
Dadenggiri	4.0	5.1	9.0	1.1	0.14
Zikzak	2.3	2.1	4.2	0.60	0.072
Betasing	0.79	0.66	1.4	0.17	0.021
Selsella	0.29	0.28	0.51	0.083	0.0097
Total	52.1	67.8	104.9	16.4	1.9

DistrictLevel Taluk-wise Data for West Khasi Hills ; Season : Kharif					
Taluk	Area (kHa)	Crop Production (kT/Yr)	Biomass Generation (kT/Yr)	Biomass Surplus (kT/Yr)	Power Potential (MWe)
Nongstoin	5.0	7.0	12.3	2.0	0.24
Nawkyrwat	4.9	6.9	15.1	1.8	0.23
Mairang	3.2	4.8	8.3	1.3	0.15
Mawshynrut	1.4	2.0	3.7	0.59	0.069
Total	14.6	20.7	39.4	5.8	0.69

Taluk-level Residue-wise

Taluk level Residue-wise Data for Damborongjeng ; Season : Kharif						
Crop	Residue	Area (kHa)	Crop Production (kT/Yr)	Biomass Generation (kT/Yr)	Biomass Surplus (kT/Yr)	Power Potential (MWe)
Paddy	Straw	16.2	23.8	35.7	3.6	0.43
Paddy	Husk	16.2	23.8	4.8	3.8	0.42
Others	Others	0.62	0.59	1.1	0.11	0.014
Total		16.8	24.4	41.5	7.5	0.86

Taluk level Residue-wise Data for Resubelpara ; Season : Kharif						
Crop	Residue	Area (kHa)	Crop Production (kT/Yr)	Biomass Generation (kT/Yr)	Biomass Surplus (kT/Yr)	Power Potential (MWe)
Others	Others	0.54	0.79	1.6	0.16	0.021
Total		0.54	0.79	1.6	0.16	0.021

Taluk level Residue-wise Data for Samanda ; Season : Kharif						
Crop	Residue	Area (kHa)	Crop Production (kT/Yr)	Biomass Generation (kT/Yr)	Biomass Surplus (kT/Yr)	Power Potential (MWe)
Others	Others	1.9	12.1	0.68	0.068	0.0089
Total		1.9	12.1	0.68	0.068	0.0089

Taluk level Residue-wise Data for Songsok ; Season : Kharif						
Crop	Residue	Area (kHa)	Crop Production (kT/Yr)	Biomass Generation (kT/Yr)	Biomass Surplus (kT/Yr)	Power Potential (MWe)
Others	Others	4.4	14.8	7.7	1.0	0.13
Total		4.4	14.8	7.7	1.0	0.13

Taluk level Residue-wise Data for Mawkynew ; Season : Kharif						
Crop	Residue	Area (kHa)	Crop Production (kT/Yr)	Biomass Generation (kT/Yr)	Biomass Surplus (kT/Yr)	Power Potential (MWe)
Maize	Stalks	1.3	2.3	4.7	0.47	0.061
Others	Others	0.43	0.43	1.7	0.17	0.023
Total		1.7	2.8	6.4	0.64	0.084

Taluk level Residue-wise Data for Mawrhlang ; Season : Kharif						
Crop	Residue	Area (kHa)	Crop Production (kT/Yr)	Biomass Generation (kT/Yr)	Biomass Surplus (kT/Yr)	Power Potential (MWe)
Others	Others	1.1	2.0	3.4	0.63	0.072
Total		1.1	2.0	3.4	0.63	0.072

Taluk level Residue-wise Data for Mawryngkneng ; Season : Kharif						
Crop	Residue	Area (kHa)	Crop Production (kT/Yr)	Biomass Generation (kT/Yr)	Biomass Surplus (kT/Yr)	Power Potential (MWe)
Others	Others	1.4	2.3	4.0	0.66	0.078
Total		1.4	2.3	4.0	0.66	0.078

Taluk level Residue-wise Data for Mawsinram ; Season : Kharif						
Crop	Residue	Area (kHa)	Crop Production (kT/Yr)	Biomass Generation (kT/Yr)	Biomass Surplus (kT/Yr)	Power Potential (MWe)
Paddy	Straw	3.2	6.0	9.0	0.90	0.11
Paddy	Husk	3.2	6.0	1.2	0.96	0.11
Others	Others	0.050	0.27	0.036	0.0036	0.00047
Total		3.3	6.3	10.2	1.9	0.21

Taluk level Residue-wise Data for Pynursla ; Season : Kharif						
Crop	Residue	Area (kHa)	Crop Production (kT/Yr)	Biomass Generation (kT/Yr)	Biomass Surplus (kT/Yr)	Power Potential (MWe)
Others	Others	0.89	4.0	2.4	0.24	0.032
Total		0.89	4.0	2.4	0.24	0.032

Taluk level Residue-wise Data for Amlarem ; Season : Kharif						
Crop	Residue	Area (kHa)	Crop Production (kT/Yr)	Biomass Generation (kT/Yr)	Biomass Surplus (kT/Yr)	Power Potential (MWe)
Others	Others	2.1	2.9	4.8	0.73	0.086
Total		2.1	2.9	4.8	0.73	0.086

Taluk level Residue-wise Data for Khlieriat ; Season : Kharif						
Crop	Residue	Area (kHa)	Crop Production (kT/Yr)	Biomass Generation (kT/Yr)	Biomass Surplus (kT/Yr)	Power Potential (MWe)
Others	Others	2.1	3.0	5.8	0.87	0.10
Total		2.1	3.0	5.8	0.87	0.10

Taluk level Residue-wise Data for Laskein ; Season : Kharif						
Crop	Residue	Area (kHa)	Crop Production (kT/Yr)	Biomass Generation (kT/Yr)	Biomass Surplus (kT/Yr)	Power Potential (MWe)
Paddy	Straw	7.2	11.4	17.1	1.7	0.21
Paddy	Husk	7.2	11.4	2.3	1.8	0.20
Others	Others	0.46	0.78	1.1	0.11	0.014
Total		7.7	12.2	20.5	3.6	0.42

Taluk level Residue-wise Data for Thadlaskein ; Season : Kharif						
Crop	Residue	Area (kHa)	Crop Production (kT/Yr)	Biomass Generation (kT/Yr)	Biomass Surplus (kT/Yr)	Power Potential (MWe)
Paddy	Straw	7.2	11.3	17.0	1.7	0.20
Paddy	Husk	7.2	11.3	2.3	1.8	0.20
Others	Others	1.6	1.7	4.2	0.42	0.055
Total		8.7	13.0	23.4	3.9	0.46

Taluk level Residue-wise Data for Bhoi Area ; Season : Kharif						
Crop	Residue	Area (kHa)	Crop Production (kT/Yr)	Biomass Generation (kT/Yr)	Biomass Surplus (kT/Yr)	Power Potential (MWe)
Paddy	Straw	10.3	20.8	31.1	3.1	0.37
Paddy	Husk	10.3	20.8	4.2	3.3	0.37
Maize	Stalks	0.99	2.1	4.3	0.43	0.056
Others	Others	0.69	6.2	1.4	0.14	0.019
Total		12.0	29.1	41.0	7.0	0.81

Taluk level Residue-wise Data for Nangpoh ; Season : Kharif						
Crop	Residue	Area (kHa)	Crop Production (kT/Yr)	Biomass Generation (kT/Yr)	Biomass Surplus (kT/Yr)	Power Potential (MWe)
Paddy	Straw	1.6	3.3	4.9	0.49	0.059
Paddy	Husk	1.6	3.3	0.66	0.53	0.058
Maize	Stalks	0.93	2.0	4.0	0.40	0.052
Others	Others	0.040	0.36	1.0	0.10	0.014
Total		2.6	5.7	10.6	1.5	0.18

Taluk level Residue-wise Data for Baghmara ; Season : Kharif						
Crop	Residue	Area (kHa)	Crop Production (kT/Yr)	Biomass Generation (kT/Yr)	Biomass Surplus (kT/Yr)	Power Potential (MWe)
Paddy	Straw	5.1	5.7	8.5	0.85	0.10
Paddy	Husk	5.1	5.7	1.1	0.91	0.100
Others	Others	1.1	1.4	3.0	0.30	0.039
Total		6.2	7.1	12.7	2.1	0.24

Taluk level Residue-wise Data for Chokpot ; Season : Kharif						
Crop	Residue	Area (kHa)	Crop Production (kT/Yr)	Biomass Generation (kT/Yr)	Biomass Surplus (kT/Yr)	Power Potential (MWe)
Paddy	Straw	3.2	3.6	5.4	0.54	0.065
Paddy	Husk	3.2	3.6	0.72	0.58	0.064
Others	Others	0.23	0.31	0.64	0.064	0.0083
Total		3.5	3.9	6.8	1.2	0.14

Taluk level Residue-wise Data for Rongara ; Season : Kharif						
Crop	Residue	Area (kHa)	Crop Production (kT/Yr)	Biomass Generation (kT/Yr)	Biomass Surplus (kT/Yr)	Power Potential (MWe)
Others	Others	1.1	1.3	2.3	0.36	0.043
Total		1.1	1.3	2.3	0.36	0.043

Taluk level Residue-wise Data for Betasing ; Season : Kharif						
Crop	Residue	Area (kHa)	Crop Production (kT/Yr)	Biomass Generation (kT/Yr)	Biomass Surplus (kT/Yr)	Power Potential (MWe)
Others	Others	0.79	0.66	1.4	0.17	0.021
Total		0.79	0.66	1.4	0.17	0.021

Taluk level Residue-wise Data for Dadenggiri ; Season : Kharif						
Crop	Residue	Area (kHa)	Crop Production (kT/Yr)	Biomass Generation (kT/Yr)	Biomass Surplus (kT/Yr)	Power Potential (MWe)
Others	Others	4.0	5.1	9.0	1.1	0.14
Total		4.0	5.1	9.0	1.1	0.14

Taluk level Residue-wise Data for Dalu ; Season : Kharif						
Crop	Residue	Area (kHa)	Crop Production (kT/Yr)	Biomass Generation (kT/Yr)	Biomass Surplus (kT/Yr)	Power Potential (MWe)
Meshta	Stalks	4.6	4.9	9.8	0.98	0.13
Maize	Stalks	3.2	4.5	9.0	0.90	0.12
Others	Others	1.9	5.4	4.6	0.62	0.077
Total		9.6	14.8	23.4	2.5	0.32

Taluk level Residue-wise Data for Rongram ; Season : Kharif						
Crop	Residue	Area (kHa)	Crop Production (kT/Yr)	Biomass Generation (kT/Yr)	Biomass Surplus (kT/Yr)	Power Potential (MWe)
Paddy	Straw	32.8	38.0	57.0	5.7	0.68
Paddy	Husk	32.8	38.0	7.6	6.1	0.67
Others	Others	2.4	6.9	1.7	0.17	0.023
Total		35.2	44.8	66.3	12.0	1.4

Taluk level Residue-wise Data for Selsella ; Season : Kharif						
Crop	Residue	Area (kHa)	Crop Production (kT/Yr)	Biomass Generation (kT/Yr)	Biomass Surplus (kT/Yr)	Power Potential (MWe)
Others	Others	0.29	0.28	0.51	0.083	0.0097
Total		0.29	0.28	0.51	0.083	0.0097

Taluk level Residue-wise Data for Zikzak ; Season : Kharif						
Crop	Residue	Area (kHa)	Crop Production (kT/Yr)	Biomass Generation (kT/Yr)	Biomass Surplus (kT/Yr)	Power Potential (MWe)
Others	Others	2.3	2.1	4.2	0.60	0.072
Total		2.3	2.1	4.2	0.60	0.072

Taluk level Residue-wise Data for Mairang ; Season : Kharif						
Crop	Residue	Area (kHa)	Crop Production (kT/Yr)	Biomass Generation (kT/Yr)	Biomass Surplus (kT/Yr)	Power Potential (MWe)
Paddy	Straw	2.3	3.2	4.8	0.48	0.057
Paddy	Husk	2.3	3.2	0.64	0.51	0.056
Others	Others	0.91	1.6	2.9	0.29	0.038
Total		3.2	4.8	8.3	1.3	0.15

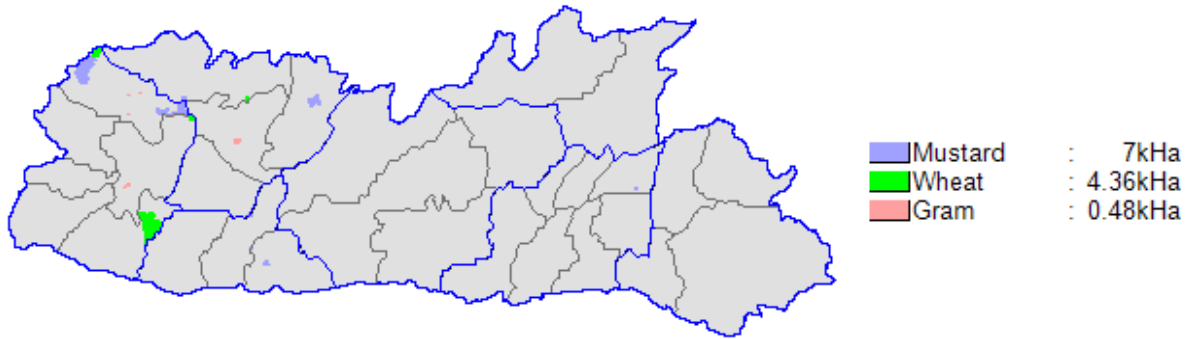
Taluk level Residue-wise Data for Mawshynrut ; Season : Kharif						
Crop	Residue	Area (kHa)	Crop Production (kT/Yr)	Biomass Generation (kT/Yr)	Biomass Surplus (kT/Yr)	Power Potential (MWe)
Others	Others	1.4	2.0	3.7	0.59	0.069
Total		1.4	2.0	3.7	0.59	0.069

Taluk level Residue-wise Data for Nawkyrwat ; Season : Kharif						
Crop	Residue	Area (kHa)	Crop Production (kT/Yr)	Biomass Generation (kT/Yr)	Biomass Surplus (kT/Yr)	Power Potential (MWe)
Others	Others	1.9	2.6	6.5	0.98	0.12
Maize	Stalks	3.0	4.3	8.7	0.87	0.11
Total		4.9	6.9	15.1	1.8	0.23

Taluk level Residue-wise Data for Nongstoin ; Season : Kharif						
Crop	Residue	Area (kHa)	Crop Production (kT/Yr)	Biomass Generation (kT/Yr)	Biomass Surplus (kT/Yr)	Power Potential (MWe)
Paddy	Straw	4.3	5.9	8.8	0.88	0.11
Paddy	Husk	4.3	5.9	1.2	0.94	0.10
Others	Others	0.70	1.2	2.3	0.23	0.031
Total		5.0	7.0	12.3	2.0	0.24

Rabi

Meghalaya-Rabi



State-level Residue-wise

State level Residue-wise Data for Meghalaya; Season : Rabi						
Crop	Residue	Area (kHa)	Crop Production (kT/Yr)	Biomass Generation (kT/Yr)	Biomass Surplus (kT/Yr)	Power Potential (MWe)
Mustard	Husk	7.0	4.6	2.3	2.2	0.26
Wheat	Pod	4.4	7.1	2.1	1.1	0.15
Mustard	Stalks	7.0	4.6	8.2	0.82	0.11
Wheat	Stalks	4.4	7.1	10.7	0.53	0.069
Others	Others	0.49	0.30	0.33	0.26	0.034
Total		11.9	12.0	23.6	4.8	0.62

State-level District-wise

State level District-wise Data for Meghalaya ; Season : Rabi					
District	Area (kHa)	Crop Production (kT/Yr)	Biomass Generation (kT/Yr)	Biomass Surplus (kT/Yr)	Power Potential (MWe)
West Garo Hills	10.3	11.0	21.7	4.2	0.54
East Garo Hills	1.2	0.70	1.3	0.46	0.058
South Garo Hills	0.30	0.20	0.46	0.13	0.016
East Khasi Hills	0.090	0.060	0.14	0.039	0.0048
Total	11.9	12.0	23.6	4.8	0.62

State-level Taluk-wise

State level Taluk-wise Data for Meghalaya ; Season : Rabi						
District	Taluk	Area (kHa)	Crop Production (kT/Yr)	Biomass Generation (kT/Yr)	Biomass Surplus (kT/Yr)	Power Potential (MWe)
West Garo Hills	Dadengiri	6.3	4.7	10.4	2.7	0.34
West Garo Hills	Dalu	3.6	5.9	10.7	1.3	0.18
East Garo Hills	Damborongjeng	0.78	0.40	0.87	0.27	0.034
West Garo Hills	Rongram	0.36	0.37	0.61	0.15	0.019
East Garo Hills	Songsok	0.22	0.15	0.16	0.13	0.017
South Garo Hills	Rongara	0.16	0.11	0.25	0.070	0.0086
South Garo Hills	Baghmara	0.14	0.094	0.22	0.061	0.0075
East Garo Hills	Resubelpara	0.19	0.15	0.28	0.052	0.0067
East Khasi Hills	Mawryngkneng	0.060	0.040	0.092	0.026	0.0032
East Khasi Hills	Mawrhlang	0.030	0.020	0.046	0.013	0.0016
East Garo Hills	Samanda	0.01	0.0067	0.0074	0.0059	0.00077
Total		11.9	12.0	23.6	4.8	0.62

District-level Residue-wise

District level Residue-wise Data for East Garo Hills; Season : Rabi						
Crop	Residue	Area (kHa)	Crop Production (kT/Yr)	Biomass Generation (kT/Yr)	Biomass Surplus (kT/Yr)	Power Potential (MWe)
Others	Others	1.2	0.70	1.3	0.46	0.058
Total		1.2	0.70	1.3	0.46	0.058

District level Residue-wise Data for East Khasi Hills; Season : Rabi						
Crop	Residue	Area (kHa)	Crop Production (kT/Yr)	Biomass Generation (kT/Yr)	Biomass Surplus (kT/Yr)	Power Potential (MWe)
Others	Others	0.090	0.060	0.14	0.039	0.0048
Total		0.090	0.060	0.14	0.039	0.0048

District level Residue-wise Data for South Garo Hills; Season : Rabi						
Crop	Residue	Area (kHa)	Crop Production (kT/Yr)	Biomass Generation (kT/Yr)	Biomass Surplus (kT/Yr)	Power Potential (MWe)
Others	Others	0.30	0.20	0.46	0.13	0.016
Total		0.30	0.20	0.46	0.13	0.016

District level Residue-wise Data for West Garo Hills; Season : Rabi						
Crop	Residue	Area (kHa)	Crop Production (kT/Yr)	Biomass Generation (kT/Yr)	Biomass Surplus (kT/Yr)	Power Potential (MWe)
Mustard	Husk	5.8	3.9	1.9	1.8	0.22
Wheat	Pod	4.3	7.0	2.1	1.1	0.15

Crop	Residue	Area (kHa)	Crop Production (kT/Yr)	Biomass Generation (kT/Yr)	Biomass Surplus (kT/Yr)	Power Potential (MWe)
Mustard	Stalks	5.8	3.9	7.0	0.70	0.091
Wheat	Stalks	4.3	7.0	10.5	0.53	0.068
Others	Others	0.19	0.095	0.10	0.084	0.011
Total		10.3	11.0	21.7	4.2	0.54

District-level Taluk-wise

DistrictLevel Taluk-wise Data for East Garo Hills ; Season : Rabi						
Taluk	Area (kHa)	Crop Production (kT/Yr)	Biomass Generation (kT/Yr)	Biomass Surplus (kT/Yr)	Power Potential (MWe)	
Damborongjeng	0.78	0.40	0.87	0.27	0.034	
Songsok	0.22	0.15	0.16	0.13	0.017	
Resubelpara	0.19	0.15	0.28	0.052	0.0067	
Samanda	0.01	0.0067	0.0074	0.0059	0.00077	
Total	1.2	0.70	1.3	0.46	0.058	

DistrictLevel Taluk-wise Data for East Khasi Hills ; Season : Rabi						
Taluk	Area (kHa)	Crop Production (kT/Yr)	Biomass Generation (kT/Yr)	Biomass Surplus (kT/Yr)	Power Potential (MWe)	
Mawryngkneng	0.060	0.040	0.092	0.026	0.0032	
Mawrhlang	0.030	0.020	0.046	0.013	0.0016	
Total	0.090	0.060	0.14	0.039	0.0048	

DistrictLevel Taluk-wise Data for South Garo Hills ; Season : Rabi					
Taluk	Area (kHa)	Crop Production (kT/Yr)	Biomass Generation (kT/Yr)	Biomass Surplus (kT/Yr)	Power Potential (MWe)
Rongara	0.16	0.11	0.25	0.070	0.0086
Baghmara	0.14	0.094	0.22	0.061	0.0075
Total	0.30	0.20	0.46	0.13	0.016

DistrictLevel Taluk-wise Data for West Garo Hills ; Season : Rabi					
Taluk	Area (kHa)	Crop Production (kT/Yr)	Biomass Generation (kT/Yr)	Biomass Surplus (kT/Yr)	Power Potential (MWe)
Dadenggiri	6.3	4.7	10.4	2.7	0.34
Dalu	3.6	5.9	10.7	1.3	0.18
Rongram	0.36	0.37	0.61	0.15	0.019
Total	10.3	11.0	21.7	4.2	0.54

Taluk-level Residue-wise

Taluk level Residue-wise Data for Damborongjeng ; Season : Rabi						
Crop	Residue	Area (kHa)	Crop Production (kT/Yr)	Biomass Generation (kT/Yr)	Biomass Surplus (kT/Yr)	Power Potential (MWe)
Others	Others	0.78	0.40	0.87	0.27	0.034
Total		0.78	0.40	0.87	0.27	0.034

Taluk level Residue-wise Data for Resubelpara ; Season : Rabi						
Crop	Residue	Area (kHa)	Crop Production (kT/Yr)	Biomass Generation (kT/Yr)	Biomass Surplus (kT/Yr)	Power Potential (MWe)
Others	Others	0.19	0.15	0.28	0.052	0.0067
Total		0.19	0.15	0.28	0.052	0.0067

Taluk level Residue-wise Data for Samanda ; Season : Rabi						
Crop	Residue	Area (kHa)	Crop Production (kT/Yr)	Biomass Generation (kT/Yr)	Biomass Surplus (kT/Yr)	Power Potential (MWe)
Others	Others	0.01	0.0067	0.0074	0.0059	0.00077
Total		0.01	0.0067	0.0074	0.0059	0.00077

Taluk level Residue-wise Data for Songsok ; Season : Rabi						
Crop	Residue	Area (kHa)	Crop Production (kT/Yr)	Biomass Generation (kT/Yr)	Biomass Surplus (kT/Yr)	Power Potential (MWe)
Others	Others	0.22	0.15	0.16	0.13	0.017
Total		0.22	0.15	0.16	0.13	0.017

Taluk level Residue-wise Data for Mawrhlang ; Season : Rabi						
Crop	Residue	Area (kHa)	Crop Production (kT/Yr)	Biomass Generation (kT/Yr)	Biomass Surplus (kT/Yr)	Power Potential (MWe)
Others	Others	0.030	0.020	0.046	0.013	0.0016
Total		0.030	0.020	0.046	0.013	0.0016

Taluk level Residue-wise Data for Mawryngkneng ; Season : Rabi						
Crop	Residue	Area (kHa)	Crop Production (kT/Yr)	Biomass Generation (kT/Yr)	Biomass Surplus (kT/Yr)	Power Potential (MWe)
Others	Others	0.060	0.040	0.092	0.026	0.0032
Total		0.060	0.040	0.092	0.026	0.0032

Taluk level Residue-wise Data for Baghmara ; Season : Rabi						
Crop	Residue	Area (kHa)	Crop Production (kT/Yr)	Biomass Generation (kT/Yr)	Biomass Surplus (kT/Yr)	Power Potential (MWe)
Others	Others	0.14	0.094	0.22	0.061	0.0075
Total		0.14	0.094	0.22	0.061	0.0075

Taluk level Residue-wise Data for Rongara ; Season : Rabi						
Crop	Residue	Area (kHa)	Crop Production (kT/Yr)	Biomass Generation (kT/Yr)	Biomass Surplus (kT/Yr)	Power Potential (MWe)
Others	Others	0.16	0.11	0.25	0.070	0.0086
Total		0.16	0.11	0.25	0.070	0.0086

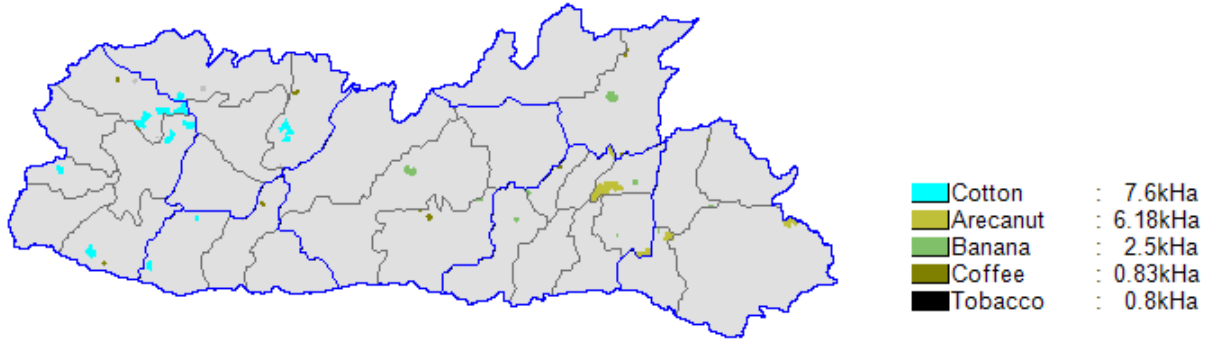
Taluk level Residue-wise Data for Dadenggiri ; Season : Rabi						
Crop	Residue	Area (kHa)	Crop Production (kT/Yr)	Biomass Generation (kT/Yr)	Biomass Surplus (kT/Yr)	Power Potential (MWe)
Mustard	Husk	5.8	3.9	1.9	1.8	0.22
Mustard	Stalks	5.8	3.9	7.0	0.70	0.091
Others	Others	0.48	0.79	1.4	0.18	0.024
Total		6.3	4.7	10.4	2.7	0.34

Taluk level Residue-wise Data for Dalu ; Season : Rabi						
Crop	Residue	Area (kHa)	Crop Production (kT/Yr)	Biomass Generation (kT/Yr)	Biomass Surplus (kT/Yr)	Power Potential (MWe)
Wheat	Pod	3.6	5.9	1.8	0.89	0.12
Wheat	Stalks	3.6	5.9	8.9	0.45	0.058
Total		3.6	5.9	10.7	1.3	0.18

Taluk level Residue-wise Data for Rongram ; Season : Rabi						
Crop	Residue	Area (kHa)	Crop Production (kT/Yr)	Biomass Generation (kT/Yr)	Biomass Surplus (kT/Yr)	Power Potential (MWe)
Others	Others	0.36	0.37	0.61	0.15	0.019
Total		0.36	0.37	0.61	0.15	0.019

Yearly

Meghalaya-Yearly



State-level Residue-wise

State level Residue-wise Data for Meghalaya; Season : Yearly						
Crop	Residue	Area (kHa)	Crop Production (kT/Yr)	Biomass Generation (kT/Yr)	Biomass Surplus (kT/Yr)	Power Potential (MWe)
Banana	Residue	2.5	27.8	83.4	16.7	2.2
Arecanut	FronDs	6.2	7.1	18.6	6.5	0.91
Cotton	Stalks	7.6	0.95	28.9	2.9	0.40
Coffee	Pruning & Wastes	0.83	0.017	3.3	2.7	0.37
Arecanut	Husk	6.2	7.1	5.7	2.0	0.28
Others	Others	0.81	0.61	2.7	0.27	0.037
Total		17.9	36.5	142.5	31.0	4.2

State-level District-wise

State level District-wise Data for Meghalaya ; Season : Yearly					
District	Area (kHa)	Crop Production (kT/Yr)	Biomass Generation (kT/Yr)	Biomass Surplus (kT/Yr)	Power Potential (MWe)
East Khasi Hills	5.5	13.5	44.2	11.7	1.6
Ri Bhoi	0.90	14.0	42.4	8.7	1.1
Jaintia Hills	1.9	3.5	10.3	3.2	0.45
West Khasi Hills	0.91	3.9	12.6	3.0	0.40
West Garo Hills	5.1	0.85	19.5	2.4	0.33
East Garo Hills	3.2	0.56	11.8	1.5	0.22
South Garo Hills	0.47	0.15	1.6	0.35	0.050
Total	17.9	36.5	142.5	31.0	4.2

State-level Taluk-wise

State level Taluk-wise Data for Meghalaya ; Season : Yearly						
District	Taluk	Area (kHa)	Crop Production (kT/Yr)	Biomass Generation (kT/Yr)	Biomass Surplus (kT/Yr)	Power Potential (MWe)
Ri Bhoi	Bhoi Area	0.90	14.0	42.4	8.7	1.1
East Khasi Hills	Mawryngkneng	3.5	5.1	17.7	5.5	0.75
East Khasi Hills	Mawkyntew	1.2	4.8	15.1	3.5	0.47
West Khasi Hills	Nongstoin	0.63	3.5	10.5	2.1	0.27
West Garo Hills	Dadengiri	3.1	0.61	11.3	1.4	0.20
Jaintia Hills	Khlieriat	0.90	1.3	3.8	1.3	0.19
East Garo Hills	Damborongjeng	2.5	0.42	9.7	1.3	0.19
Jaintia Hills	Amlarem	0.81	1.6	4.7	1.3	0.18
East Khasi Hills	Mawrhlang	0.22	1.7	5.5	1.3	0.17
West Khasi Hills	Nawkyrwat	0.26	0.42	2.0	0.83	0.11
East Khasi Hills	Mawsinram	0.11	1.4	4.1	0.82	0.11
East Khasi Hills	Myllem	0.46	0.48	1.8	0.62	0.087
Jaintia Hills	Thadlaskein	0.17	0.51	1.7	0.45	0.060
West Garo Hills	Dalu	0.69	0.078	2.8	0.41	0.058
West Garo Hills	Rongram	1.00	0.12	4.1	0.41	0.057
South Garo Hills	Baghmara	0.17	0.10	0.37	0.23	0.032
East Garo Hills	Resubelpara	0.61	0.14	2.2	0.22	0.030
West Garo Hills	Betasing	0.33	0.040	1.3	0.13	0.019
South Garo Hills	Chokpot	0.30	0.051	1.3	0.13	0.018

District	Taluk	Area (kHa)	Crop Production (kT/Yr)	Biomass Generation (kT/Yr)	Biomass Surplus (kT/Yr)	Power Potential (MWe)
Jaintia Hills	Laskein	0.034	0.00067	0.13	0.11	0.015
West Khasi Hills	Mairang	0.030	0.00060	0.12	0.096	0.013
East Khasi Hills	Pynursla	0.0090	0.00018	0.036	0.029	0.0040
East Garo Hills	Songsok	0.0024	4.78E-05	0.0096	0.0076	0.0011
East Khasi Hills	Shaila Bholaganj	0.0017	3.46E-05	0.0069	0.0055	0.00077
West Garo Hills	Selsella	0.0010	0.00077	0.00077	7.65E-05	9.95E-06
South Garo Hills	Rongara	6.00E-05	6.00E-05	6.00E-05	6.00E-06	7.80E-07
Total		17.9	36.5	142.5	31.0	4.2

District-level Residue-wise

District level Residue-wise Data for East Garo Hills; Season : Yearly						
Crop	Residue	Area (kHa)	Crop Production (kT/Yr)	Biomass Generation (kT/Yr)	Biomass Surplus (kT/Yr)	Power Potential (MWe)
Cotton	Stalks	2.7	0.35	10.3	1.0	0.14
Coffee	Pruning & Wastes	0.13	0.0026	0.52	0.42	0.058
Others	Others	0.30	0.20	0.98	0.098	0.014
Total		3.2	0.56	11.8	1.5	0.22

District level Residue-wise Data for East Khasi Hills; Season : Yearly						
Crop	Residue	Area (kHa)	Crop Production (kT/Yr)	Biomass Generation (kT/Yr)	Biomass Surplus (kT/Yr)	Power Potential (MWe)
Arecanut	FronDs	4.7	4.8	14.0	4.9	0.69
Banana	Residue	0.70	8.7	26.0	5.2	0.68
Arecanut	Husk	4.7	4.8	3.9	1.4	0.19
Others	Others	0.094	0.0019	0.38	0.30	0.042
Total		5.5	13.5	44.2	11.7	1.6

District level Residue-wise Data for Jaintia Hills; Season : Yearly						
Crop	Residue	Area (kHa)	Crop Production (kT/Yr)	Biomass Generation (kT/Yr)	Biomass Surplus (kT/Yr)	Power Potential (MWe)
Arecanut	FronDs	1.5	2.2	4.6	1.6	0.22
Banana	Residue	0.30	1.2	3.6	0.72	0.094
Arecanut	Husk	1.5	2.2	1.8	0.63	0.088
Others	Others	0.088	0.0018	0.35	0.28	0.039
Total		1.9	3.5	10.3	3.2	0.45

District level Residue-wise Data for Ri Bhoi; Season : Yearly						
Crop	Residue	Area (kHa)	Crop Production (kT/Yr)	Biomass Generation (kT/Yr)	Biomass Surplus (kT/Yr)	Power Potential (MWe)
Banana	Residue	0.80	14.0	42.0	8.4	1.1
Others	Others	0.097	0.0019	0.39	0.31	0.043
Total		0.90	14.0	42.4	8.7	1.1

District level Residue-wise Data for South Garo Hills; Season : Yearly						
Crop	Residue	Area (kHa)	Crop Production (kT/Yr)	Biomass Generation (kT/Yr)	Biomass Surplus (kT/Yr)	Power Potential (MWe)
Others	Others	0.47	0.15	1.6	0.35	0.050
Total		0.47	0.15	1.6	0.35	0.050

District level Residue-wise Data for West Garo Hills; Season : Yearly						
Crop	Residue	Area (kHa)	Crop Production (kT/Yr)	Biomass Generation (kT/Yr)	Biomass Surplus (kT/Yr)	Power Potential (MWe)
Cotton	Stalks	4.6	0.55	17.4	1.7	0.24
Coffee	Pruning & Wastes	0.14	0.0029	0.58	0.46	0.065
Others	Others	0.40	0.30	1.5	0.15	0.021
Total		5.1	0.85	19.5	2.4	0.33

District level Residue-wise Data for West Khasi Hills; Season : Yearly						
Crop	Residue	Area (kHa)	Crop Production (kT/Yr)	Biomass Generation (kT/Yr)	Biomass Surplus (kT/Yr)	Power Potential (MWe)
Banana	Residue	0.70	3.9	11.7	2.3	0.30
Coffee	Pruning & Wastes	0.21	0.0042	0.85	0.68	0.095
Others	Others	0	0	0.0025	0.00025	3.05E-05
Total		0.91	3.9	12.6	3.0	0.40

District-level Taluk-wise

DistrictLevel Taluk-wise Data for East Garo Hills ; Season : Yearly					
Taluk	Area (kHa)	Crop Production (kT/Yr)	Biomass Generation (kT/Yr)	Biomass Surplus (kT/Yr)	Power Potential (MWe)
Damborongjeng	2.5	0.42	9.7	1.3	0.19
Resubelpara	0.61	0.14	2.2	0.22	0.030
Songsok	0.0024	4.78E-05	0.0096	0.0076	0.0011
Total	3.2	0.56	11.8	1.5	0.22

DistrictLevel Taluk-wise Data for East Khasi Hills ; Season : Yearly					
Taluk	Area (kHa)	Crop Production (kT/Yr)	Biomass Generation (kT/Yr)	Biomass Surplus (kT/Yr)	Power Potential (MWe)
Mawryngkneng	3.5	5.1	17.7	5.5	0.75
Mawkynew	1.2	4.8	15.1	3.5	0.47
Mawrhlang	0.22	1.7	5.5	1.3	0.17
Mawsinram	0.11	1.4	4.1	0.82	0.11
Myllem	0.46	0.48	1.8	0.62	0.087
Pynursla	0.0090	0.00018	0.036	0.029	0.0040
Shaila Bholaganj	0.0017	3.46E-05	0.0069	0.0055	0.00077
Total	5.5	13.5	44.2	11.7	1.6

DistrictLevel Taluk-wise Data for Jaintia Hills ; Season : Yearly					
Taluk	Area (kHa)	Crop Production (kT/Yr)	Biomass Generation (kT/Yr)	Biomass Surplus (kT/Yr)	Power Potential (MWe)
Khlieriat	0.90	1.3	3.8	1.3	0.19
Amlarem	0.81	1.6	4.7	1.3	0.18
Thadlaskein	0.17	0.51	1.7	0.45	0.060
Laskein	0.034	0.00067	0.13	0.11	0.015
Total	1.9	3.5	10.3	3.2	0.45

DistrictLevel Taluk-wise Data for Ri Bhoi ; Season : Yearly					
Taluk	Area (kHa)	Crop Production (kT/Yr)	Biomass Generation (kT/Yr)	Biomass Surplus (kT/Yr)	Power Potential (MWe)
Bhoi Area	0.90	14.0	42.4	8.7	1.1
Total	0.90	14.0	42.4	8.7	1.1

DistrictLevel Taluk-wise Data for South Garo Hills ; Season : Yearly					
Taluk	Area (kHa)	Crop Production (kT/Yr)	Biomass Generation (kT/Yr)	Biomass Surplus (kT/Yr)	Power Potential (MWe)
Baghmara	0.17	0.10	0.37	0.23	0.032
Chokpot	0.30	0.051	1.3	0.13	0.018
Rongara	6.00E-05	6.00E-05	6.00E-05	6.00E-06	7.80E-07
Total	0.47	0.15	1.6	0.35	0.050

DistrictLevel Taluk-wise Data for West Garo Hills ; Season : Yearly					
Taluk	Area (kHa)	Crop Production (kT/Yr)	Biomass Generation (kT/Yr)	Biomass Surplus (kT/Yr)	Power Potential (MWe)
Dadenggiri	3.1	0.61	11.3	1.4	0.20
Dalu	0.69	0.078	2.8	0.41	0.058
Rongram	1.00	0.12	4.1	0.41	0.057
Betasing	0.33	0.040	1.3	0.13	0.019
Selsella	0.0010	0.00077	0.00077	7.65E-05	9.95E-06
Total	5.1	0.85	19.5	2.4	0.33

DistrictLevel Taluk-wise Data for West Khasi Hills ; Season : Yearly					
Taluk	Area (kHa)	Crop Production (kT/Yr)	Biomass Generation (kT/Yr)	Biomass Surplus (kT/Yr)	Power Potential (MWe)
Nongstoin	0.63	3.5	10.5	2.1	0.27
Nawkyrwat	0.26	0.42	2.0	0.83	0.11
Mairang	0.030	0.00060	0.12	0.096	0.013
Total	0.91	3.9	12.6	3.0	0.40

Taluk-level Residue-wise

Taluk level Residue-wise Data for Damborongjeng ; Season : Yearly						
Crop	Residue	Area (kHa)	Crop Production (kT/Yr)	Biomass Generation (kT/Yr)	Biomass Surplus (kT/Yr)	Power Potential (MWe)
Cotton	Stalks	2.2	0.29	8.4	0.84	0.12
Coffee	Pruning & Wastes	0.13	0.0025	0.51	0.41	0.057
Others	Others	0.20	0.14	0.77	0.077	0.011
Total		2.5	0.42	9.7	1.3	0.19

Taluk level Residue-wise Data for Resubelpara ; Season : Yearly						
Crop	Residue	Area (kHa)	Crop Production (kT/Yr)	Biomass Generation (kT/Yr)	Biomass Surplus (kT/Yr)	Power Potential (MWe)
Others	Others	0.61	0.14	2.2	0.22	0.030
Total		0.61	0.14	2.2	0.22	0.030

Taluk level Residue-wise Data for Songsok ; Season : Yearly						
Crop	Residue	Area (kHa)	Crop Production (kT/Yr)	Biomass Generation (kT/Yr)	Biomass Surplus (kT/Yr)	Power Potential (MWe)
Others	Others	0.0024	4.78E-05	0.0096	0.0076	0.0011
Total		0.0024	4.78E-05	0.0096	0.0076	0.0011

Taluk level Residue-wise Data for Mawkynew ; Season : Yearly						
Crop	Residue	Area (kHa)	Crop Production (kT/Yr)	Biomass Generation (kT/Yr)	Biomass Surplus (kT/Yr)	Power Potential (MWe)
Banana	Residue	0.32	3.9	11.8	2.4	0.31
Arecanut	FronDs	0.86	0.89	2.6	0.90	0.13
Others	Others	6.90E-05	1.38E-06	0.71	0.25	0.035
Total		1.2	4.8	15.1	3.5	0.47

Taluk level Residue-wise Data for Mawrhlang ; Season : Yearly						
Crop	Residue	Area (kHa)	Crop Production (kT/Yr)	Biomass Generation (kT/Yr)	Biomass Surplus (kT/Yr)	Power Potential (MWe)
Banana	Residue	0.14	1.7	5.2	1.0	0.13
Others	Others	0.083	0.0017	0.33	0.27	0.037
Total		0.22	1.7	5.5	1.3	0.17

Taluk level Residue-wise Data for Mawryngkneng ; Season : Yearly						
Crop	Residue	Area (kHa)	Crop Production (kT/Yr)	Biomass Generation (kT/Yr)	Biomass Surplus (kT/Yr)	Power Potential (MWe)
Arecanut	FronDs	3.3	3.5	10.0	3.5	0.49
Arecanut	Husk	3.3	3.5	2.8	0.97	0.14
Banana	Residue	0.13	1.6	4.9	0.97	0.13
Total		3.5	5.1	17.7	5.5	0.75

Taluk level Residue-wise Data for Mawsinram ; Season : Yearly						
Crop	Residue	Area (kHa)	Crop Production (kT/Yr)	Biomass Generation (kT/Yr)	Biomass Surplus (kT/Yr)	Power Potential (MWe)
Banana	Residue	0.11	1.4	4.1	0.82	0.11
Others	Others	2.00E-05	4.00E-07	8.02E-05	6.40E-05	8.96E-06
Total		0.11	1.4	4.1	0.82	0.11

Taluk level Residue-wise Data for Myllem ; Season : Yearly						
Crop	Residue	Area (kHa)	Crop Production (kT/Yr)	Biomass Generation (kT/Yr)	Biomass Surplus (kT/Yr)	Power Potential (MWe)
Arecanut	FronDs	0.46	0.48	1.4	0.49	0.068
Others	Others	0	0	0.38	0.13	0.019
Total		0.46	0.48	1.8	0.62	0.087

Taluk level Residue-wise Data for Pynursla ; Season : Yearly						
Crop	Residue	Area (kHa)	Crop Production (kT/Yr)	Biomass Generation (kT/Yr)	Biomass Surplus (kT/Yr)	Power Potential (MWe)
Others	Others	0.0090	0.00018	0.036	0.029	0.0040
Total		0.0090	0.00018	0.036	0.029	0.0040

Taluk level Residue-wise Data for Shaila Bholaganj ; Season : Yearly						
Crop	Residue	Area (kHa)	Crop Production (kT/Yr)	Biomass Generation (kT/Yr)	Biomass Surplus (kT/Yr)	Power Potential (MWe)
Others	Others	0.0017	3.46E-05	0.0069	0.0055	0.00077
Total		0.0017	3.46E-05	0.0069	0.0055	0.00077

Taluk level Residue-wise Data for Amlarem ; Season : Yearly						
Crop	Residue	Area (kHa)	Crop Production (kT/Yr)	Biomass Generation (kT/Yr)	Biomass Surplus (kT/Yr)	Power Potential (MWe)
Arecanut	FronDs	0.63	0.93	1.9	0.67	0.093
Banana	Residue	0.17	0.70	2.1	0.42	0.054
Others	Others	0	0	0.75	0.26	0.037
Total		0.81	1.6	4.7	1.3	0.18

Taluk level Residue-wise Data for Khlieriat ; Season : Yearly						
Crop	Residue	Area (kHa)	Crop Production (kT/Yr)	Biomass Generation (kT/Yr)	Biomass Surplus (kT/Yr)	Power Potential (MWe)
Arecanut	FronDs	0.89	1.3	2.7	0.94	0.13
Arecanut	Husk	0.89	1.3	1.0	0.37	0.051
Others	Others	0.010	0.00021	0.041	0.033	0.0046
Total		0.90	1.3	3.8	1.3	0.19

Taluk level Residue-wise Data for Laskein ; Season : Yearly						
Crop	Residue	Area (kHa)	Crop Production (kT/Yr)	Biomass Generation (kT/Yr)	Biomass Surplus (kT/Yr)	Power Potential (MWe)
Others	Others	0.034	0.00067	0.13	0.11	0.015
Total		0.034	0.00067	0.13	0.11	0.015

Taluk level Residue-wise Data for Thadlaskein ; Season : Yearly						
Crop	Residue	Area (kHa)	Crop Production (kT/Yr)	Biomass Generation (kT/Yr)	Biomass Surplus (kT/Yr)	Power Potential (MWe)
Others	Others	0.17	0.51	1.7	0.45	0.060
Total		0.17	0.51	1.7	0.45	0.060

Taluk level Residue-wise Data for Bhoi Area ; Season : Yearly						
Crop	Residue	Area (kHa)	Crop Production (kT/Yr)	Biomass Generation (kT/Yr)	Biomass Surplus (kT/Yr)	Power Potential (MWe)
Banana	Residue	0.80	14.0	42.0	8.4	1.1
Others	Others	0.097	0.0019	0.39	0.31	0.043
Total		0.90	14.0	42.4	8.7	1.1

Taluk level Residue-wise Data for Baghmara ; Season : Yearly						
Crop	Residue	Area (kHa)	Crop Production (kT/Yr)	Biomass Generation (kT/Yr)	Biomass Surplus (kT/Yr)	Power Potential (MWe)
Others	Others	0.17	0.10	0.37	0.23	0.032
Total		0.17	0.10	0.37	0.23	0.032

Taluk level Residue-wise Data for Chokpot ; Season : Yearly						
Crop	Residue	Area (kHa)	Crop Production (kT/Yr)	Biomass Generation (kT/Yr)	Biomass Surplus (kT/Yr)	Power Potential (MWe)
Others	Others	0.30	0.051	1.3	0.13	0.018
Total		0.30	0.051	1.3	0.13	0.018

Taluk level Residue-wise Data for Rongara ; Season : Yearly						
Crop	Residue	Area (kHa)	Crop Production (kT/Yr)	Biomass Generation (kT/Yr)	Biomass Surplus (kT/Yr)	Power Potential (MWe)
Others	Others	6.00E-05	6.00E-05	6.00E-05	6.00E-06	7.80E-07
Total		6.00E-05	6.00E-05	6.00E-05	6.00E-06	7.80E-07

Taluk level Residue-wise Data for Betasing ; Season : Yearly						
Crop	Residue	Area (kHa)	Crop Production (kT/Yr)	Biomass Generation (kT/Yr)	Biomass Surplus (kT/Yr)	Power Potential (MWe)
Others	Others	0.33	0.040	1.3	0.13	0.019
Total		0.33	0.040	1.3	0.13	0.019

Taluk level Residue-wise Data for Dadenggiri ; Season : Yearly						
Crop	Residue	Area (kHa)	Crop Production (kT/Yr)	Biomass Generation (kT/Yr)	Biomass Surplus (kT/Yr)	Power Potential (MWe)
Cotton	Stalks	2.6	0.31	9.9	0.99	0.14
Others	Others	0.49	0.30	1.4	0.40	0.056
Total		3.1	0.61	11.3	1.4	0.20

Taluk level Residue-wise Data for Dalu ; Season : Yearly						
Crop	Residue	Area (kHa)	Crop Production (kT/Yr)	Biomass Generation (kT/Yr)	Biomass Surplus (kT/Yr)	Power Potential (MWe)
Others	Others	0.69	0.078	2.8	0.41	0.058
Total		0.69	0.078	2.8	0.41	0.058

Taluk level Residue-wise Data for Rongram ; Season : Yearly						
Crop	Residue	Area (kHa)	Crop Production (kT/Yr)	Biomass Generation (kT/Yr)	Biomass Surplus (kT/Yr)	Power Potential (MWe)
Cotton	Stalks	1.00	0.12	3.8	0.38	0.053
Others	Others	0.00073	0.00011	0.27	0.028	0.0040
Total		1.00	0.12	4.1	0.41	0.057

Taluk level Residue-wise Data for Selsella ; Season : Yearly						
Crop	Residue	Area (kHa)	Crop Production (kT/Yr)	Biomass Generation (kT/Yr)	Biomass Surplus (kT/Yr)	Power Potential (MWe)
Others	Others	0.0010	0.00077	0.00077	7.65E-05	9.95E-06
Total		0.0010	0.00077	0.00077	7.65E-05	9.95E-06

Taluk level Residue-wise Data for Mairang ; Season : Yearly						
Crop	Residue	Area (kHa)	Crop Production (kT/Yr)	Biomass Generation (kT/Yr)	Biomass Surplus (kT/Yr)	Power Potential (MWe)
Others	Others	0.030	0.00060	0.12	0.096	0.013
Total		0.030	0.00060	0.12	0.096	0.013

Taluk level Residue-wise Data for Nawkyrwat ; Season : Yearly						
Crop	Residue	Area (kHa)	Crop Production (kT/Yr)	Biomass Generation (kT/Yr)	Biomass Surplus (kT/Yr)	Power Potential (MWe)
Coffee	Pruning & Wastes	0.18	0.0036	0.73	0.58	0.082
Others	Others	0.074	0.41	1.2	0.25	0.032
Total		0.26	0.42	2.0	0.83	0.11

Taluk level Residue-wise Data for Nongstoin ; Season : Yearly						
Crop	Residue	Area (kHa)	Crop Production (kT/Yr)	Biomass Generation (kT/Yr)	Biomass Surplus (kT/Yr)	Power Potential (MWe)
Banana	Residue	0.63	3.5	10.5	2.1	0.27
Total		0.63	3.5	10.5	2.1	0.27

Agro

State-level Residue-wise

State level Residue-wise Data for Meghalaya; Biomass Class : Agro						
Crop	Residue	Area (kHa)	Crop Production (kT/Yr)	Biomass Generation (kT/Yr)	Biomass Surplus (kT/Yr)	Power Potential (MWe)
Paddy	Straw	106.4	151.4	227.1	22.7	2.7
Paddy	Husk	106.4	151.4	30.3	24.2	2.7
Banana	Residue	2.5	27.8	83.4	16.7	2.2
Arecanut	FronDs	6.2	7.1	18.6	6.5	0.91
Maize	Stalks	16.8	25.0	50.1	5.0	0.65
Cotton	Stalks	7.6	0.95	28.9	2.9	0.40
Coffee	Pruning & Wastes	0.83	0.017	3.3	2.7	0.37
Arecanut	Husk	6.2	7.1	5.7	2.0	0.28
Meshta	Stalks	9.0	10.4	20.7	2.1	0.27
Mustard	Husk	7.0	4.6	2.3	2.2	0.26
Others	Others	13.7	50.1	12.3	1.5	0.20
Maize	Cobs	16.8	25.0	12.5	1.3	0.18
Wheat	Pod	4.4	7.1	2.1	1.1	0.15
Mustard	Stalks	7.0	4.6	8.2	0.82	0.11
Wheat	Stalks	4.4	7.1	10.7	0.53	0.069
Total		174.4	284.4	516.1	92.1	11.4

State-level District-wise

State level District-wise Data for Meghalaya ; Biomass Class : Agro						
District	Area (kHa)	Crop Production (kT/Yr)	Biomass Generation (kT/Yr)	Biomass Surplus (kT/Yr)	Power Potential (MWe)	
West Garo Hills	67.5	79.6	146.1	23.0	2.8	
Ri Bhoi	15.5	48.8	94.0	17.2	2.1	
East Khasi Hills	13.9	30.9	70.8	15.8	2.1	
Jaintia Hills	22.5	34.5	64.8	12.4	1.5	
East Garo Hills	28.0	53.3	64.6	10.8	1.3	
West Khasi Hills	15.5	24.6	51.9	8.8	1.1	
South Garo Hills	11.5	12.7	23.9	4.1	0.49	
Total		174.4	284.4	516.1	92.1	11.4

State-level Taluk-wise

State level Taluk-wise Data for Meghalaya ; Biomass Class : Agro						
District	Taluk	Area (kHa)	Crop Production (kT/Yr)	Biomass Generation (kT/Yr)	Biomass Surplus (kT/Yr)	Power Potential (MWe)
Ri Bhoi	Bhoi Area	12.9	43.1	83.4	15.7	2.0
West Garo Hills	Rongram	36.5	45.3	71.0	12.5	1.5
East Garo Hills	Damborongjeng	20.1	25.2	52.1	9.1	1.1
East Khasi Hills	Mawryngkneng	4.9	7.4	21.8	6.1	0.83
West Garo Hills	Dadenggeri	13.4	10.4	30.7	5.2	0.67
West Garo Hills	Dalu	13.9	20.8	36.9	4.3	0.56
East Khasi Hills	Mawkyntrew	2.9	7.6	21.5	4.2	0.55
Jaintia Hills	Thadlaskein	8.9	13.5	25.1	4.4	0.52
West Khasi Hills	Nongstoin	5.6	10.5	22.8	4.1	0.51
Jaintia Hills	Laskein	7.7	12.2	20.6	3.7	0.44
West Khasi Hills	Nawkyrwat	5.2	7.3	17.1	2.7	0.34
East Khasi Hills	Mawsinram	3.4	7.6	14.3	2.7	0.32
Jaintia Hills	Khlieriat	3.0	4.3	9.5	2.2	0.29
South Garo Hills	Baghmara	6.5	7.3	13.3	2.4	0.28
Jaintia Hills	Amlarem	2.9	4.5	9.6	2.1	0.27
East Khasi Hills	Mawrhlang	1.3	3.8	9.0	1.9	0.25
Ri Bhoi	Nangpoh	2.6	5.7	10.6	1.5	0.18
West Khasi Hills	Mairang	3.3	4.8	8.4	1.4	0.16
South Garo Hills	Chokpot	3.8	4.0	8.0	1.3	0.15
East Garo Hills	Songsok	4.6	14.9	7.8	1.2	0.15
East Khasi Hills	Myllem	0.46	0.48	1.8	0.62	0.087
West Garo Hills	Zikzak	2.3	2.1	4.2	0.60	0.072
West Khasi Hills	Mawshynrut	1.4	2.0	3.7	0.59	0.069
East Garo Hills	Resubelpara	1.3	1.1	4.0	0.43	0.057
South Garo Hills	Rongara	1.3	1.4	2.5	0.43	0.051
West Garo Hills	Betasing	1.1	0.70	2.8	0.30	0.040
East Khasi Hills	Pynursla	0.90	4.0	2.4	0.27	0.036
West Garo Hills	Selsella	0.29	0.28	0.51	0.083	0.0097
East Garo Hills	Samanda	1.9	12.1	0.69	0.074	0.0097
East Khasi Hills	Shaila Bholaganj	0.0017	3.46E-05	0.0069	0.0055	0.00077
Total		174.4	284.4	516.1	92.1	11.4

District-level Residue-wise

District level Residue-wise Data for East Garo Hills; Biomass Class : Agro						
Crop	Residue	Area (kHa)	Crop Production (kT/Yr)	Biomass Generation (kT/Yr)	Biomass Surplus (kT/Yr)	Power Potential (MWe)
Paddy	Straw	17.5	25.7	38.6	3.9	0.46
Paddy	Husk	17.5	25.7	5.1	4.1	0.45
Others	Others	7.6	27.2	10.0	1.3	0.17
Cotton	Stalks	2.7	0.35	10.3	1.0	0.14
Coffee	Pruning & Wastes	0.13	0.0026	0.52	0.42	0.058
Total		28.0	53.3	64.6	10.8	1.3

District level Residue-wise Data for East Khasi Hills; Biomass Class : Agro						
Crop	Residue	Area (kHa)	Crop Production (kT/Yr)	Biomass Generation (kT/Yr)	Biomass Surplus (kT/Yr)	Power Potential (MWe)
Arecanut	FronDs	4.7	4.8	14.0	4.9	0.69
Banana	Residue	0.70	8.7	26.0	5.2	0.68
Arecanut	Husk	4.7	4.8	3.9	1.4	0.19
Paddy	Straw	5.3	9.9	14.8	1.5	0.18
Paddy	Husk	5.3	9.9	2.0	1.6	0.17
Maize	Stalks	1.9	3.5	6.9	0.69	0.090
Others	Others	1.3	4.0	3.2	0.61	0.083
Total		13.9	30.9	70.8	15.8	2.1

District level Residue-wise Data for Jaintia Hills; Biomass Class : Agro						
Crop	Residue	Area (kHa)	Crop Production (kT/Yr)	Biomass Generation (kT/Yr)	Biomass Surplus (kT/Yr)	Power Potential (MWe)
Paddy	Straw	16.8	26.5	39.7	4.0	0.48
Paddy	Husk	16.8	26.5	5.3	4.2	0.47
Arecanut	FronDs	1.5	2.2	4.6	1.6	0.22
Banana	Residue	0.30	1.2	3.6	0.72	0.094
Arecanut	Husk	1.5	2.2	1.8	0.63	0.088
Maize	Stalks	3.0	3.2	6.5	0.65	0.084
Others	Others	0.98	1.3	3.3	0.58	0.079
Total		22.5	34.5	64.8	12.4	1.5

District level Residue-wise Data for Ri Bhoi; Biomass Class : Agro						
Crop	Residue	Area (kHa)	Crop Production (kT/Yr)	Biomass Generation (kT/Yr)	Biomass Surplus (kT/Yr)	Power Potential (MWe)
Banana	Residue	0.80	14.0	42.0	8.4	1.1
Paddy	Straw	12.0	24.1	36.1	3.6	0.43
Paddy	Husk	12.0	24.1	4.8	3.8	0.42
Maize	Stalks	1.9	4.1	8.3	0.83	0.11
Others	Others	0.83	6.6	2.8	0.55	0.077
Total		15.5	48.8	94.0	17.2	2.1

District level Residue-wise Data for South Garo Hills; Biomass Class : Agro						
Crop	Residue	Area (kHa)	Crop Production (kT/Yr)	Biomass Generation (kT/Yr)	Biomass Surplus (kT/Yr)	Power Potential (MWe)
Paddy	Straw	9.2	10.3	15.4	1.5	0.18
Paddy	Husk	9.2	10.3	2.1	1.6	0.18
Others	Others	2.3	2.4	6.4	0.92	0.12
Total		11.5	12.7	23.9	4.1	0.49

District level Residue-wise Data for West Garo Hills; Biomass Class : Agro						
Crop	Residue	Area (kHa)	Crop Production (kT/Yr)	Biomass Generation (kT/Yr)	Biomass Surplus (kT/Yr)	Power Potential (MWe)
Paddy	Straw	36.2	42.0	63.0	6.3	0.76
Paddy	Husk	36.2	42.0	8.4	6.7	0.74
Cotton	Stalks	4.6	0.55	17.4	1.7	0.24
Mustard	Husk	5.8	3.9	1.9	1.8	0.22
Meshta	Stalks	7.0	7.5	15.0	1.5	0.20
Maize	Stalks	4.0	5.8	11.6	1.2	0.15
Wheat	Pod	4.3	7.0	2.1	1.1	0.15
Others	Others	5.5	12.9	8.6	0.99	0.13
Mustard	Stalks	5.8	3.9	7.0	0.70	0.091
Wheat	Stalks	4.3	7.0	10.5	0.53	0.068
Coffee	Pruning & Wastes	0.14	0.0029	0.58	0.46	0.065
Total		67.5	79.6	146.1	23.0	2.8

District level Residue-wise Data for West Khasi Hills; Biomass Class : Agro						
Crop	Residue	Area (kHa)	Crop Production (kT/Yr)	Biomass Generation (kT/Yr)	Biomass Surplus (kT/Yr)	Power Potential (MWe)
Banana	Residue	0.70	3.9	11.7	2.3	0.30
Paddy	Straw	9.5	13.0	19.5	2.0	0.23
Paddy	Husk	9.5	13.0	2.6	2.1	0.23
Maize	Stalks	4.7	6.8	13.6	1.4	0.18
Coffee	Pruning & Wastes	0.21	0.0042	0.85	0.68	0.095
Others	Others	0.40	0.90	3.7	0.37	0.051
Total		15.5	24.6	51.9	8.8	1.1

District-level Taluk-wise

DistrictLevel Taluk-wise Data for East Garo Hills ; Biomass Class : Agro					
Taluk	Area (kHa)	Crop Production (kT/Yr)	Biomass Generation (kT/Yr)	Biomass Surplus (kT/Yr)	Power Potential (MWe)
Damborongjeng	20.1	25.2	52.1	9.1	1.1
Songsok	4.6	14.9	7.8	1.2	0.15
Resubelpara	1.3	1.1	4.0	0.43	0.057
Samanda	1.9	12.1	0.69	0.074	0.0097
Total	28.0	53.3	64.6	10.8	1.3

DistrictLevel Taluk-wise Data for East Khasi Hills ; Biomass Class : Agro					
Taluk	Area (kHa)	Crop Production (kT/Yr)	Biomass Generation (kT/Yr)	Biomass Surplus (kT/Yr)	Power Potential (MWe)
Mawryngkneng	4.9	7.4	21.8	6.1	0.83
Mawkynew	2.9	7.6	21.5	4.2	0.55
Mawsinram	3.4	7.6	14.3	2.7	0.32
Mawrhlang	1.3	3.8	9.0	1.9	0.25
Myllem	0.46	0.48	1.8	0.62	0.087
Pynursla	0.90	4.0	2.4	0.27	0.036
Shaila Bholaganj	0.0017	3.46E-05	0.0069	0.0055	0.00077
Total	13.9	30.9	70.8	15.8	2.1

DistrictLevel Taluk-wise Data for Jaintia Hills ; Biomass Class : Agro					
Taluk	Area (kHa)	Crop Production (kT/Yr)	Biomass Generation (kT/Yr)	Biomass Surplus (kT/Yr)	Power Potential (MWe)
Thadlaskein	8.9	13.5	25.1	4.4	0.52
Laskein	7.7	12.2	20.6	3.7	0.44
Khlieriat	3.0	4.3	9.5	2.2	0.29
Amlarem	2.9	4.5	9.6	2.1	0.27
Total	22.5	34.5	64.8	12.4	1.5

DistrictLevel Taluk-wise Data for Ri Bhoi ; Biomass Class : Agro					
Taluk	Area (kHa)	Crop Production (kT/Yr)	Biomass Generation (kT/Yr)	Biomass Surplus (kT/Yr)	Power Potential (MWe)
Bhoi Area	12.9	43.1	83.4	15.7	2.0
Nangpoh	2.6	5.7	10.6	1.5	0.18
Total	15.5	48.8	94.0	17.2	2.1

DistrictLevel Taluk-wise Data for South Garo Hills ; Biomass Class : Agro					
Taluk	Area (kHa)	Crop Production (kT/Yr)	Biomass Generation (kT/Yr)	Biomass Surplus (kT/Yr)	Power Potential (MWe)
Baghmara	6.5	7.3	13.3	2.4	0.28
Chokpot	3.8	4.0	8.0	1.3	0.15
Rongara	1.3	1.4	2.5	0.43	0.051
Total	11.5	12.7	23.9	4.1	0.49

DistrictLevel Taluk-wise Data for West Garo Hills ; Biomass					
Class : Agro					
Taluk	Area (kHa)	Crop Production (kT/Yr)	Biomass Generation (kT/Yr)	Biomass Surplus (kT/Yr)	Power Potential (MWe)
Rongram	36.5	45.3	71.0	12.5	1.5
Dadengiri	13.4	10.4	30.7	5.2	0.67
Dalu	13.9	20.8	36.9	4.3	0.56
Zikzak	2.3	2.1	4.2	0.60	0.072
Betasing	1.1	0.70	2.8	0.30	0.040
Selsella	0.29	0.28	0.51	0.083	0.0097
Total	67.5	79.6	146.1	23.0	2.8

DistrictLevel Taluk-wise Data for West Khasi Hills ; Biomass					
Class : Agro					
Taluk	Area (kHa)	Crop Production (kT/Yr)	Biomass Generation (kT/Yr)	Biomass Surplus (kT/Yr)	Power Potential (MWe)
Nongstoin	5.6	10.5	22.8	4.1	0.51
Nawkyrwat	5.2	7.3	17.1	2.7	0.34
Mairang	3.3	4.8	8.4	1.4	0.16
Mawshynrut	1.4	2.0	3.7	0.59	0.069
Total	15.5	24.6	51.9	8.8	1.1

Taluk-level Residue-wise

Taluk level Residue-wise Data for Damborongjeng ; Biomass Class : Agro						
Crop	Residue	Area (kHa)	Crop Production (kT/Yr)	Biomass Generation (kT/Yr)	Biomass Surplus (kT/Yr)	Power Potential (MWe)
Paddy	Straw	16.2	23.8	35.7	3.6	0.43
Paddy	Husk	16.2	23.8	4.8	3.8	0.42
Cotton	Stalks	2.2	0.29	8.4	0.84	0.12
Others	Others	1.6	1.1	2.7	0.46	0.058
Coffee	Pruning & Wastes	0.13	0.0025	0.51	0.41	0.057
Total		20.1	25.2	52.1	9.1	1.1

Taluk level Residue-wise Data for Resubelpara ; Biomass Class : Agro						
Crop	Residue	Area (kHa)	Crop Production (kT/Yr)	Biomass Generation (kT/Yr)	Biomass Surplus (kT/Yr)	Power Potential (MWe)
Others	Others	1.3	1.1	4.0	0.43	0.057
Total		1.3	1.1	4.0	0.43	0.057

Taluk level Residue-wise Data for Samanda ; Biomass Class : Agro						
Crop	Residue	Area (kHa)	Crop Production (kT/Yr)	Biomass Generation (kT/Yr)	Biomass Surplus (kT/Yr)	Power Potential (MWe)
Others	Others	1.9	12.1	0.69	0.074	0.0097
Total		1.9	12.1	0.69	0.074	0.0097

Taluk level Residue-wise Data for Songsok ; Biomass Class : Agro						
Crop	Residue	Area (kHa)	Crop Production (kT/Yr)	Biomass Generation (kT/Yr)	Biomass Surplus (kT/Yr)	Power Potential (MWe)
Others	Others	4.6	14.9	7.8	1.2	0.15
Total		4.6	14.9	7.8	1.2	0.15

Taluk level Residue-wise Data for Mawkynrew ; Biomass Class : Agro						
Crop	Residue	Area (kHa)	Crop Production (kT/Yr)	Biomass Generation (kT/Yr)	Biomass Surplus (kT/Yr)	Power Potential (MWe)
Banana	Residue	0.32	3.9	11.8	2.4	0.31
Arecanut	FronDs	0.86	0.89	2.6	0.90	0.13
Maize	Stalks	1.3	2.3	4.7	0.47	0.061
Others	Others	0.43	0.43	2.4	0.42	0.058
Total		2.9	7.6	21.5	4.2	0.55

Taluk level Residue-wise Data for Mawrhlang ; Biomass Class : Agro						
Crop	Residue	Area (kHa)	Crop Production (kT/Yr)	Biomass Generation (kT/Yr)	Biomass Surplus (kT/Yr)	Power Potential (MWe)
Banana	Residue	0.14	1.7	5.2	1.0	0.13
Others	Others	1.2	2.0	3.8	0.91	0.11
Total		1.3	3.8	9.0	1.9	0.25

Taluk level Residue-wise Data for Mawryngkneng ; Biomass Class : Agro						
Crop	Residue	Area (kHa)	Crop Production (kT/Yr)	Biomass Generation (kT/Yr)	Biomass Surplus (kT/Yr)	Power Potential (MWe)
Arecanut	FronDs	3.3	3.5	10.0	3.5	0.49
Arecanut	Husk	3.3	3.5	2.8	0.97	0.14
Banana	Residue	0.13	1.6	4.9	0.97	0.13
Others	Others	1.4	2.3	4.1	0.69	0.081
Total		4.9	7.4	21.8	6.1	0.83

Taluk level Residue-wise Data for Mawsinram ; Biomass Class : Agro						
Crop	Residue	Area (kHa)	Crop Production (kT/Yr)	Biomass Generation (kT/Yr)	Biomass Surplus (kT/Yr)	Power Potential (MWe)
Paddy	Straw	3.2	6.0	9.0	0.90	0.11
Banana	Residue	0.11	1.4	4.1	0.82	0.11
Paddy	Husk	3.2	6.0	1.2	0.96	0.11
Others	Others	0.050	0.27	0.036	0.0037	0.00048
Total		3.4	7.6	14.3	2.7	0.32

Taluk level Residue-wise Data for Myllem ; Biomass Class : Agro						
Crop	Residue	Area (kHa)	Crop Production (kT/Yr)	Biomass Generation (kT/Yr)	Biomass Surplus (kT/Yr)	Power Potential (MWe)
Arecanut	FronDs	0.46	0.48	1.4	0.49	0.068
Others	Others	0	0	0.38	0.13	0.019
Total		0.46	0.48	1.8	0.62	0.087

Taluk level Residue-wise Data for Pynursla ; Biomass Class : Agro						
Crop	Residue	Area (kHa)	Crop Production (kT/Yr)	Biomass Generation (kT/Yr)	Biomass Surplus (kT/Yr)	Power Potential (MWe)
Others	Others	0.90	4.0	2.4	0.27	0.036
Total		0.90	4.0	2.4	0.27	0.036

Taluk level Residue-wise Data for Shaila Bholaganj ; Biomass Class : Agro						
Crop	Residue	Area (kHa)	Crop Production (kT/Yr)	Biomass Generation (kT/Yr)	Biomass Surplus (kT/Yr)	Power Potential (MWe)
Others	Others	0.0017	3.46E-05	0.0069	0.0055	0.00077
Total		0.0017	3.46E-05	0.0069	0.0055	0.00077

Taluk level Residue-wise Data for Amlarem ; Biomass Class : Agro						
Crop	Residue	Area (kHa)	Crop Production (kT/Yr)	Biomass Generation (kT/Yr)	Biomass Surplus (kT/Yr)	Power Potential (MWe)
Others	Others	2.1	2.9	5.6	0.99	0.12
Arecanut	FronDs	0.63	0.93	1.9	0.67	0.093
Banana	Residue	0.17	0.70	2.1	0.42	0.054
Total		2.9	4.5	9.6	2.1	0.27

Taluk level Residue-wise Data for Khlieriat ; Biomass Class : Agro						
Crop	Residue	Area (kHa)	Crop Production (kT/Yr)	Biomass Generation (kT/Yr)	Biomass Surplus (kT/Yr)	Power Potential (MWe)
Arecanut	FronDs	0.89	1.3	2.7	0.94	0.13
Others	Others	2.2	3.0	5.8	0.90	0.11
Arecanut	Husk	0.89	1.3	1.0	0.37	0.051
Total		3.0	4.3	9.5	2.2	0.29

Taluk level Residue-wise Data for Laskein ; Biomass Class : Agro						
Crop	Residue	Area (kHa)	Crop Production (kT/Yr)	Biomass Generation (kT/Yr)	Biomass Surplus (kT/Yr)	Power Potential (MWe)
Paddy	Straw	7.2	11.4	17.1	1.7	0.21
Paddy	Husk	7.2	11.4	2.3	1.8	0.20
Others	Others	0.49	0.78	1.2	0.22	0.029
Total		7.7	12.2	20.6	3.7	0.44

Taluk level Residue-wise Data for Thadlaskein ; Biomass Class : Agro						
Crop	Residue	Area (kHa)	Crop Production (kT/Yr)	Biomass Generation (kT/Yr)	Biomass Surplus (kT/Yr)	Power Potential (MWe)
Paddy	Straw	7.2	11.3	17.0	1.7	0.20
Paddy	Husk	7.2	11.3	2.3	1.8	0.20
Others	Others	1.7	2.2	5.9	0.87	0.12
Total		8.9	13.5	25.1	4.4	0.52

Taluk level Residue-wise Data for Bhoi Area ; Biomass Class : Agro						
Crop	Residue	Area (kHa)	Crop Production (kT/Yr)	Biomass Generation (kT/Yr)	Biomass Surplus (kT/Yr)	Power Potential (MWe)
Banana	Residue	0.80	14.0	42.0	8.4	1.1
Paddy	Straw	10.3	20.8	31.1	3.1	0.37
Paddy	Husk	10.3	20.8	4.2	3.3	0.37
Others	Others	0.79	6.2	1.8	0.45	0.062
Maize	Stalks	0.99	2.1	4.3	0.43	0.056
Total		12.9	43.1	83.4	15.7	2.0

Taluk level Residue-wise Data for Nangpoh ; Biomass Class : Agro						
Crop	Residue	Area (kHa)	Crop Production (kT/Yr)	Biomass Generation (kT/Yr)	Biomass Surplus (kT/Yr)	Power Potential (MWe)
Paddy	Straw	1.6	3.3	4.9	0.49	0.059
Paddy	Husk	1.6	3.3	0.66	0.53	0.058
Maize	Stalks	0.93	2.0	4.0	0.40	0.052
Others	Others	0.040	0.36	1.0	0.10	0.014
Total		2.6	5.7	10.6	1.5	0.18

Taluk level Residue-wise Data for Baghmara ; Biomass Class : Agro						
Crop	Residue	Area (kHa)	Crop Production (kT/Yr)	Biomass Generation (kT/Yr)	Biomass Surplus (kT/Yr)	Power Potential (MWe)
Paddy	Straw	5.1	5.7	8.5	0.85	0.10
Paddy	Husk	5.1	5.7	1.1	0.91	0.100
Others	Others	1.4	1.6	3.6	0.59	0.079
Total		6.5	7.3	13.3	2.4	0.28

Taluk level Residue-wise Data for Chokpot ; Biomass Class : Agro						
Crop	Residue	Area (kHa)	Crop Production (kT/Yr)	Biomass Generation (kT/Yr)	Biomass Surplus (kT/Yr)	Power Potential (MWe)
Paddy	Straw	3.2	3.6	5.4	0.54	0.065
Paddy	Husk	3.2	3.6	0.72	0.58	0.064
Others	Others	0.53	0.36	1.9	0.19	0.026
Total		3.8	4.0	8.0	1.3	0.15

Taluk level Residue-wise Data for Rongara ; Biomass Class : Agro						
Crop	Residue	Area (kHa)	Crop Production (kT/Yr)	Biomass Generation (kT/Yr)	Biomass Surplus (kT/Yr)	Power Potential (MWe)
Others	Others	1.3	1.4	2.5	0.43	0.051
Total		1.3	1.4	2.5	0.43	0.051

Taluk level Residue-wise Data for Betasing ; Biomass Class : Agro						
Crop	Residue	Area (kHa)	Crop Production (kT/Yr)	Biomass Generation (kT/Yr)	Biomass Surplus (kT/Yr)	Power Potential (MWe)
Others	Others	1.1	0.70	2.8	0.30	0.040
Total		1.1	0.70	2.8	0.30	0.040

Taluk level Residue-wise Data for Dadengiri ; Biomass Class : Agro						
Crop	Residue	Area (kHa)	Crop Production (kT/Yr)	Biomass Generation (kT/Yr)	Biomass Surplus (kT/Yr)	Power Potential (MWe)
Mustard	Husk	5.8	3.9	1.9	1.8	0.22
Others	Others	5.0	6.2	11.8	1.7	0.22
Cotton	Stalks	2.6	0.31	9.9	0.99	0.14
Mustard	Stalks	5.8	3.9	7.0	0.70	0.091
Total		13.4	10.4	30.7	5.2	0.67

Taluk level Residue-wise Data for Dalu ; Biomass Class : Agro						
Crop	Residue	Area (kHa)	Crop Production (kT/Yr)	Biomass Generation (kT/Yr)	Biomass Surplus (kT/Yr)	Power Potential (MWe)
Others	Others	2.6	5.5	7.4	1.0	0.14
Meshta	Stalks	4.6	4.9	9.8	0.98	0.13
Wheat	Pod	3.6	5.9	1.8	0.89	0.12
Maize	Stalks	3.2	4.5	9.0	0.90	0.12
Wheat	Stalks	3.6	5.9	8.9	0.45	0.058
Total		13.9	20.8	36.9	4.3	0.56

Taluk level Residue-wise Data for Rongram ; Biomass Class : Agro						
Crop	Residue	Area (kHa)	Crop Production (kT/Yr)	Biomass Generation (kT/Yr)	Biomass Surplus (kT/Yr)	Power Potential (MWe)
Paddy	Straw	32.8	38.0	57.0	5.7	0.68
Paddy	Husk	32.8	38.0	7.6	6.1	0.67
Cotton	Stalks	1.00	0.12	3.8	0.38	0.053
Others	Others	2.8	7.2	2.6	0.35	0.046
Total		36.5	45.3	71.0	12.5	1.5

Taluk level Residue-wise Data for Selsella ; Biomass Class : Agro						
Crop	Residue	Area (kHa)	Crop Production (kT/Yr)	Biomass Generation (kT/Yr)	Biomass Surplus (kT/Yr)	Power Potential (MWe)
Others	Others	0.29	0.28	0.51	0.083	0.0097
Total		0.29	0.28	0.51	0.083	0.0097

Taluk level Residue-wise Data for Zikzak ; Biomass Class : Agro						
Crop	Residue	Area (kHa)	Crop Production (kT/Yr)	Biomass Generation (kT/Yr)	Biomass Surplus (kT/Yr)	Power Potential (MWe)
Others	Others	2.3	2.1	4.2	0.60	0.072
Total		2.3	2.1	4.2	0.60	0.072

Taluk level Residue-wise Data for Mairang ; Biomass Class : Agro						
Crop	Residue	Area (kHa)	Crop Production (kT/Yr)	Biomass Generation (kT/Yr)	Biomass Surplus (kT/Yr)	Power Potential (MWe)
Paddy	Straw	2.3	3.2	4.8	0.48	0.057
Paddy	Husk	2.3	3.2	0.64	0.51	0.056
Others	Others	0.94	1.6	3.0	0.39	0.052
Total		3.3	4.8	8.4	1.4	0.16

Taluk level Residue-wise Data for Mawshynrut ; Biomass Class : Agro						
Crop	Residue	Area (kHa)	Crop Production (kT/Yr)	Biomass Generation (kT/Yr)	Biomass Surplus (kT/Yr)	Power Potential (MWe)
Others	Others	1.4	2.0	3.7	0.59	0.069
Total		1.4	2.0	3.7	0.59	0.069

Taluk level Residue-wise Data for Nawkyrwat ; Biomass Class : Agro						
Crop	Residue	Area (kHa)	Crop Production (kT/Yr)	Biomass Generation (kT/Yr)	Biomass Surplus (kT/Yr)	Power Potential (MWe)
Others	Others	2.0	3.0	7.7	1.2	0.15
Maize	Stalks	3.0	4.3	8.7	0.87	0.11
Coffee	Pruning & Wastes	0.18	0.0036	0.73	0.58	0.082
Total		5.2	7.3	17.1	2.7	0.34

Taluk level Residue-wise Data for Nongstoin ; Biomass Class : Agro						
Crop	Residue	Area (kHa)	Crop Production (kT/Yr)	Biomass Generation (kT/Yr)	Biomass Surplus (kT/Yr)	Power Potential (MWe)
Banana	Residue	0.63	3.5	10.5	2.1	0.27
Paddy	Straw	4.3	5.9	8.8	0.88	0.11
Paddy	Husk	4.3	5.9	1.2	0.94	0.10
Others	Others	0.70	1.2	2.3	0.23	0.031
Total		5.6	10.5	22.8	4.1	0.51

Note:

Others' contributes to collection of crops whose Power Potential is less than 0.05MWyre. These residues will not be separately listed instead they are aggregated into 'Others'.

The Tolerance for the above data at Taluk level is about 25%. The reside-wise data at taluk level may have a tolerance of more than 25% depending on spatial availability of agro-area and spatial aggregation as compared to statistically reported crop area. District Survey instituted by MNRE [Ministry of New & Renewable Energy] was done and biomass was reported for period beyond 1999 of the States country wide. The updated crop data at the district level is used as an input to construct the Biomass Atlas Enabling spatial extraction of the biomass data tables above.